



DENNIS G. MEYER, LS 4791
LICENSE EXPIRES: 9/30/11

ANDREGG GEOMATICS

I CERTIFY THAT I SUPERVISED THE SURVEY OF THE PROJECT LANDS. THAT THE PROJECT BOUNDARY DELINEATION FOR THE MIDDLE FORK AMERICAN RIVER PROJECT AS SHOWN ON THIS EXHIBIT "G" IS DEVELOPED WITHIN REASONABLE ACCURACIES AS REQUIRED IN 18CFR4.39 & 18CFR4.41 TO THE GEOGRAPHIC LOCATION. THIS EXHIBIT IS BASED UPON MAPS OF THE EXHIBIT "K", SHEET 10 OF THE MIDDLE FORK AMERICAN RIVER PROJECT NO.2079 AND BOOK 2 SURVEY OF 1877, AND THE RECORDED AND CORRECTED SHOW HEREON. SEE CONTROL SCHEME FOR DETAILS OF THE BOUNDARY DELINEATION AND DATA ACQUISITION.

SURVEYORS STATEMENT

NOTES

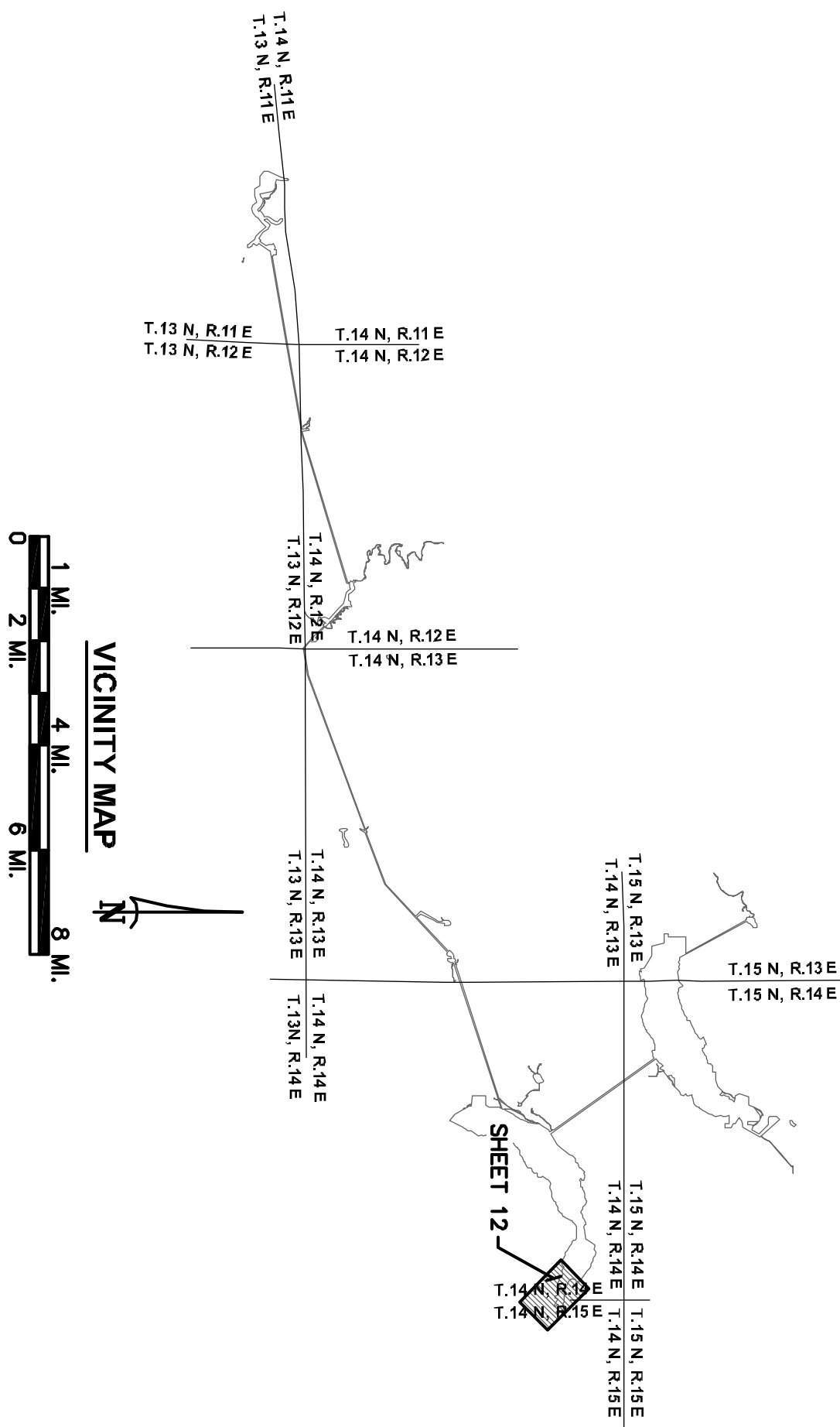
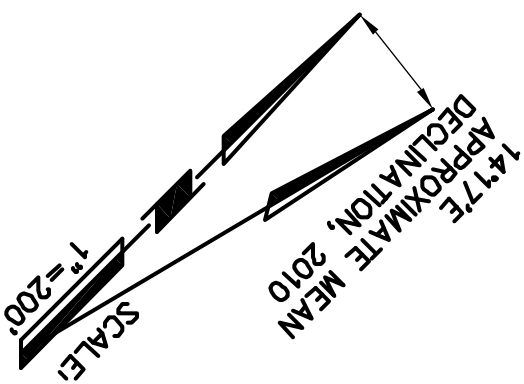
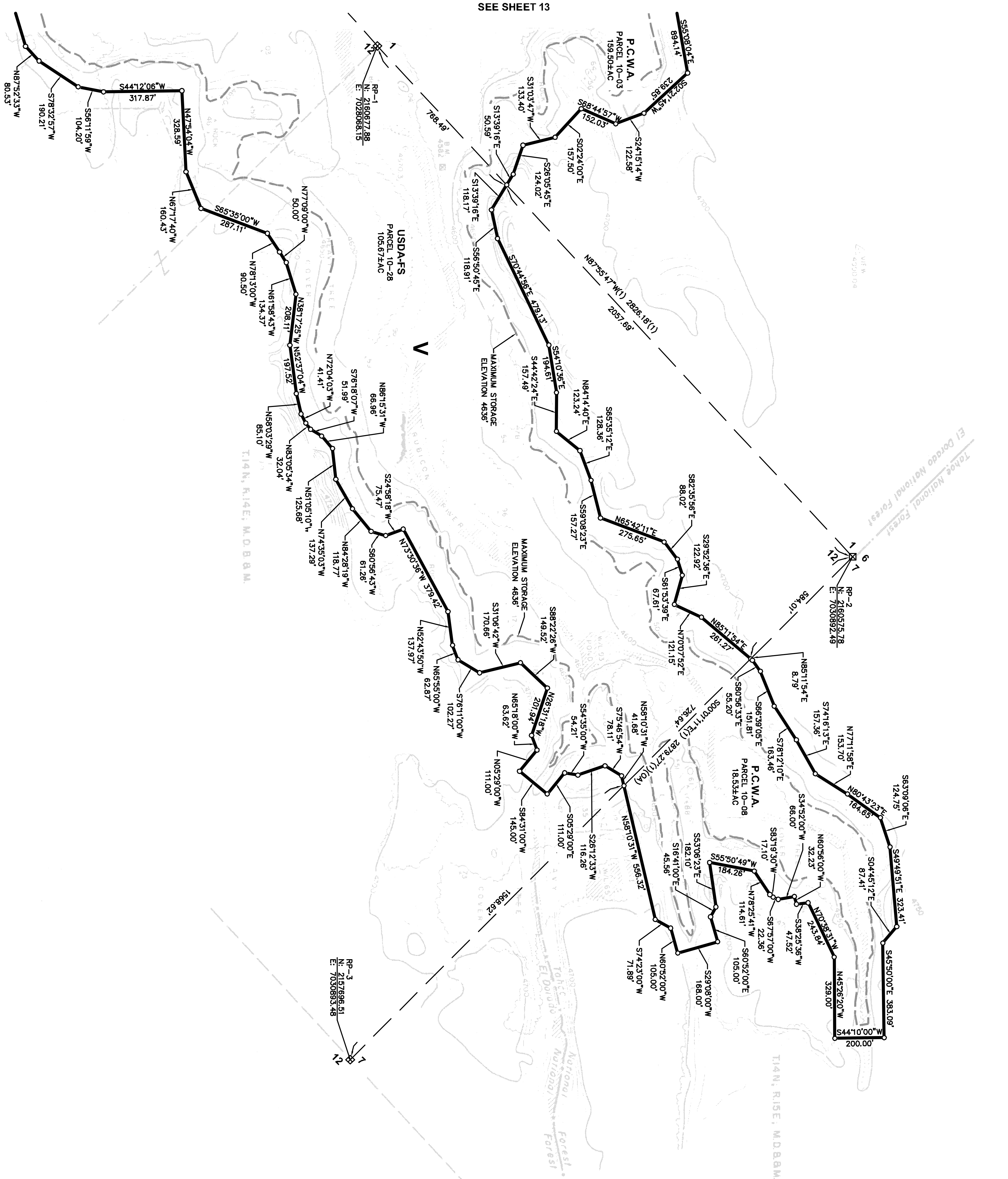
SHADED TOPOGRAPHY SHOWN HEREON PER EXHIBIT "K", SHEET 10, MIDDLE FORK AMERICAN RIVER PROJECT; HELL HOLE RESERVOIR PROJECT AREA, REVISED OCT. 20, 1977

ALL FAULTS AND FEATURES SHOWN HERE ON ARE PER DATA COLLECTED BY OTHERS

MAXIMUM STORAGE ELEVATION CONTOUR OF 4636' PROVIDED BY OTHERS

REFERENCE POINT COORDINATES

NAD83 CALIFORNIA STATE PLANE COORDINATE SYSTEM ZONE II (CCS83, ZONE 2); U.S. SURVEY FEET



- LEGEND**
- PROJECT BOUNDARY
 - RESERVOIR STORAGE STAGE
 - TUNNEL (WITH SHAFT)
 - SECTION LINE, ESTABLISHED
 - SECTION LINE, PROTRACTED
 - SUBDIVISION LINE, GOVERNMENT LAND SURVEY
 - SECTION CORNER, FOUND
 - SECTION CORNER, RECORD
 - 1/4 CORNER, FOUND
 - 1/4 CORNER, RECORD
 - COUNTY LINE
 - U.S. FOREST BOUNDARY
 - PROJECT BOUNDARY CORNER
 - OVERALL DIMENSION
 - RP REFERENCE POINT
 - PUBLIC LAND
 - ROAD
 - BRIDGE
 - RIVER OR PERENNIAL STREAM
 - INTERMITTENT STREAM
 - SPRING
 - POND OR LAKE, WATER LEVEL JULY 1961
 - TREES OR BRUSH
 - STREAM FLOW GAGING STATION
 - WATER SURFACE GAGING STATION
 - CAMPGROUND
 - BUILDING
 - GOVERNMENT BENCH MARK
 - BENCH MARK RELOCATION
 - PHOTOGRAMMETRIC PRINCIPAL POINT
 - PHOTOGRAMMETRIC ELEVATION
 - PHOTOGRAMMETRIC ELEVATION
 - MINERAL RIGHTS ONLY
 - RECORD PER 2 ROS 78

EXHIBIT 'G' PROJECT 2079
MIDDLE FORK AMERICAN RIVER PROJECT
HELL HOLE RESERVOIR PROJECT AREA
A PORTION OF SECTIONS 1 & 12, T.14 N., R.14 E., &
A PORTION OF SECTION 7, T.14 N., R.15 E., M.D.M.
PLACER COUNTY, CALIFORNIA
SCALE: 1"=200' FEBRUARY 11, 2011

ANDREGG
GEOMATICS

0 50 100 200 400 600
SHEET 12 OF 33